



CLICK

eomac textile moulded acoustic wall and ceiling tiles by ARTOFIX



just CLICK it

eomac CLICK™ is a new concept of acoustic wall and ceiling tiles. CLICK™ is manufactured by ARTOFIX through a patented process, and exclusively presented by **eomac**.

- Moulded textile tiles, installed using only a stapler
- Eco-friendly - Made with recycled polyester
- Extremely lightweight and easy-to-ship
- Excellent acoustic properties - NRC as high as 0.80

wall models

CLICK™ wall tiles are designed with integrated keys, allowing for a quick and easy installation.



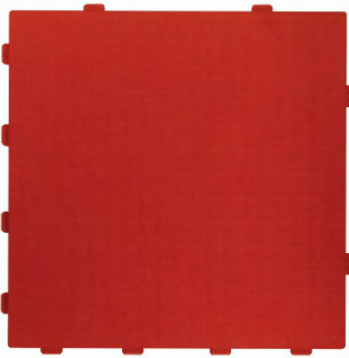
ZEN 1



ZEN 2



CUBE



ZEN 4



WAVE



PULSAR

100% Polyester CLICK™ Tiles ¹	Weight ²	Dimensions	Coverage	Surface Density ²	Packaging (# Tiles / Box)
ZEN 1	0.15 kg (0.30 lb)	288 mm x 288 mm x 16 mm (11 ³ / ₈ " x 11 ³ / ₈ " x 5 ⁵ / ₈ ")	0.083 m ² (0.9 ft ²)	1.80 kg/m ² (0.33 lb/ft ²)	60
ZEN 2	0.30 kg (0.60 lb)	288 mm x 578 mm x 16 mm (11 ³ / ₈ " x 22 ³ / ₄ " x 5 ⁵ / ₈ ")	0.167 m ² (1.8 ft ²)	1.80 kg/m ² (0.33 lb/ft ²)	30
CUBE	0.30 kg (0.60 lb)	288 mm x 578 mm x 19 mm (11 ³ / ₈ " x 22 ³ / ₄ " x 3 ³ / ₄ ")	0.167 m ² (1.8 ft ²)	1.80 kg/m ² (0.33 lb/ft ²)	30
ZEN 4	0.60 kg (1.39 lb)	578 mm x 578 mm x 16 mm (22 ³ / ₄ " x 22 ³ / ₄ " x 5 ⁵ / ₈ ")	0.364 m ² (3.6 ft ²)	1.65 kg/m ² (0.39 lb/ft ²)	15
WAVE	0.60 kg (1.39 lb)	578 mm x 578 mm x 19 mm (22 ³ / ₄ " x 22 ³ / ₄ " x 3 ³ / ₄ ")	0.364 m ² (3.6 ft ²)	1.65 kg/m ² (0.39 lb/ft ²)	15
PULSAR	0.60 kg (1.39 lb)	578 mm x 578 mm x 76 mm (22 ³ / ₄ " x 22 ³ / ₄ " x 3")	0.364 m ² (3.6 ft ²)	1.65 kg/m ² (0.39 lb/ft ²)	10

¹Backing is 100% polyester, other contents based on selected covering fabric.

²Averaged nominal values. May vary depending on covering fabric.



ideal for both
walls and ceilings

ceiling models

CLICK™ suspended ceiling tiles are designed with a flange on the outer perimeter, allowing for installation with standard ceiling grid systems.



flange



ZEN 4 C



WAVE C



PULSAR C

100% Polyester CLICK™ Tiles ¹	Weight ²	Dimensions	Coverage	Surface Density ²	Packaging (# Tiles / Box)
ZEN 4 C	0.60 kg (1.39 lb)	578 mm x 578 mm x 16 mm (22 3/4" x 22 3/4" x 5/8")	0.364 m ² (3.6 ft ²)	1.65 kg/m ² (0.39 lb/ft ²)	15
WAVE C	0.60 kg (1.39 lb)	578 mm x 578 mm x 19 mm (22 3/4" x 22 3/4" x 3/4")	0.364 m ² (3.6 ft ²)	1.65 kg/m ² (0.39 lb/ft ²)	15
PULSAR C	0.60 kg (1.39 lb)	578 mm x 578 mm x 76 mm (22 3/4" x 22 3/4" x 3")	0.364 m ² (3.6 ft ²)	1.65 kg/m ² (0.39 lb/ft ²)	10

¹Backing is 100% polyester, other contents based on selected covering fabric.

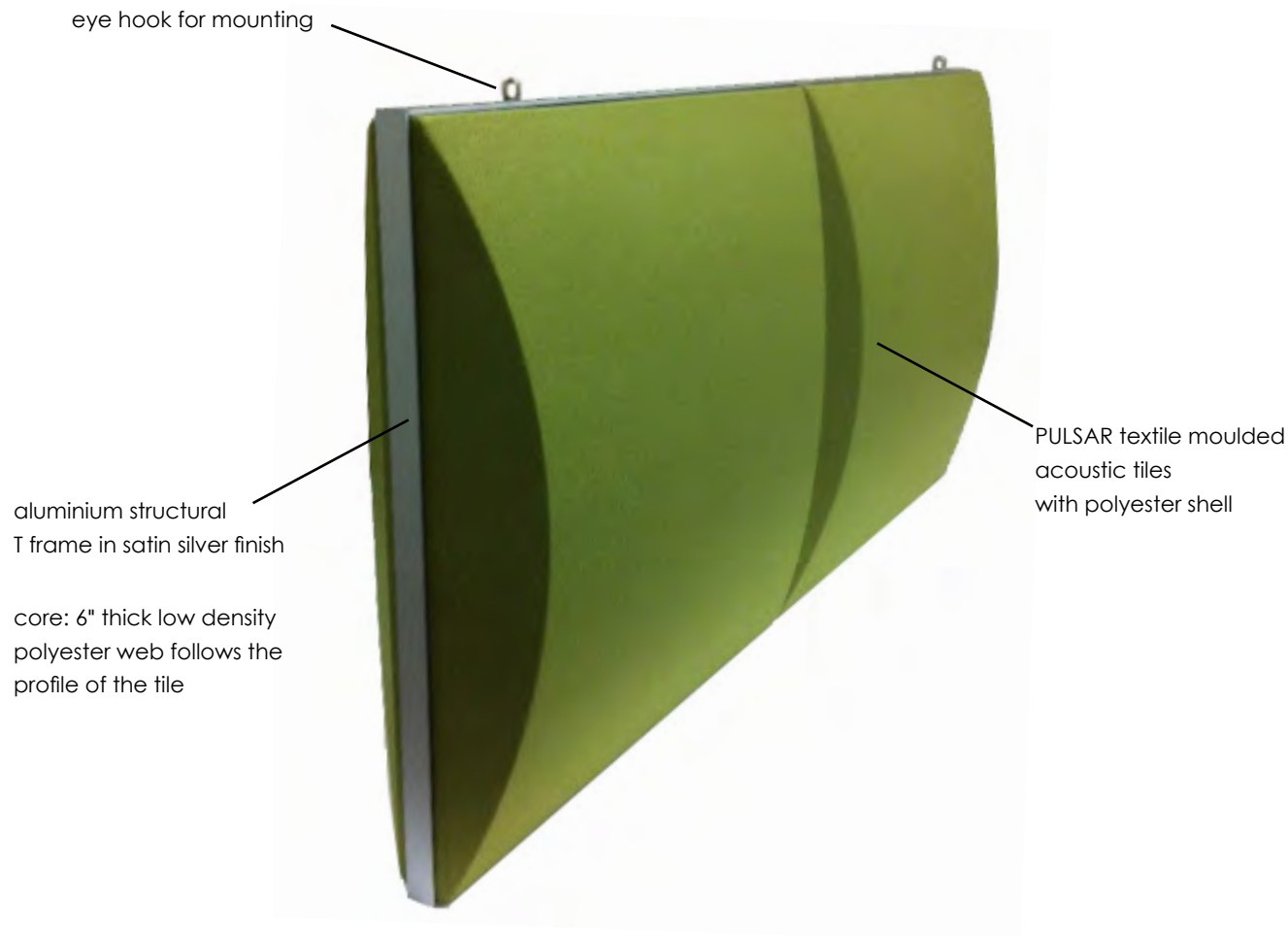
²Averaged nominal values. May vary depending on covering fabric.



well beyond
traditional baffles

baffle system

The new PULSAR suspended baffle system provides maximum acoustic performance with less panels per area required.



100% Polyester CLICK™ Tiles ¹	Weight ²	Dimensions ²	Tiles Per View-side
PULSAR BAFFLE II	9.1 kg (20 lb)	584 mm x 1162 mm x 152 mm (23" x 45.75" x 6")	2
PULSAR BAFFLE III	13.6 kg (30 lb)	584 mm x 1740 mm x 152 mm (23" x 68.50" x 6")	3
PULSAR BAFFLE IV	18.1 kg (40 lb)	584 mm x 2318 mm x 152 mm (23" x 91.25" x 6")	4

¹Backing is 100% polyester, other contents based on selected covering fabric.

²Averaged nominal values. May vary depending on covering fabric.

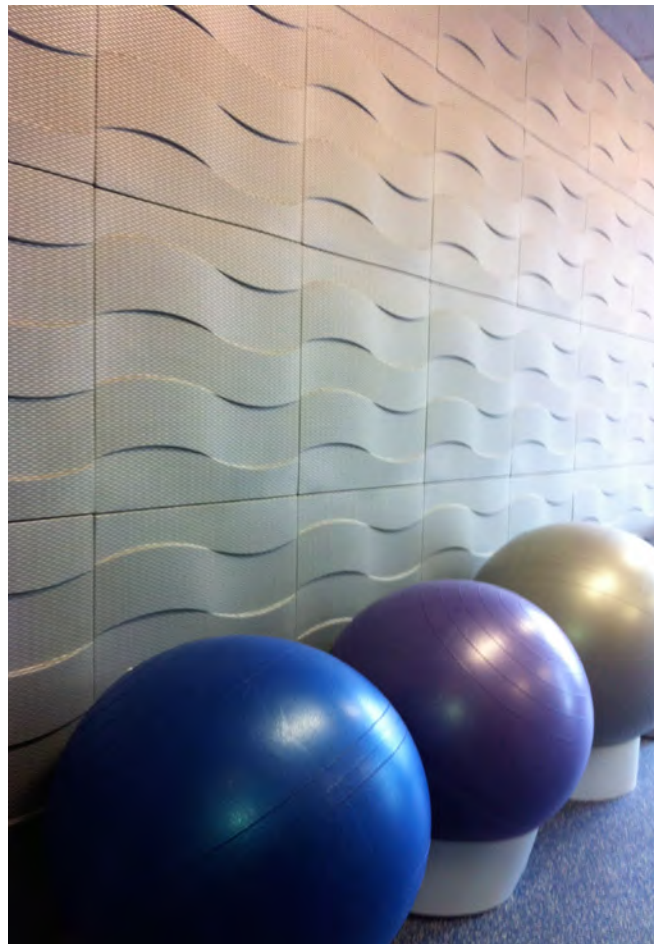
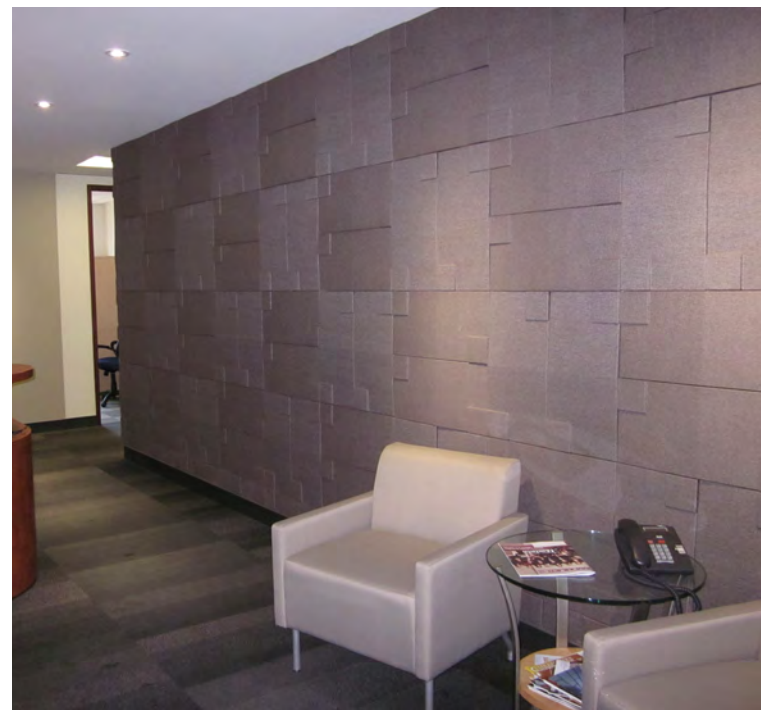
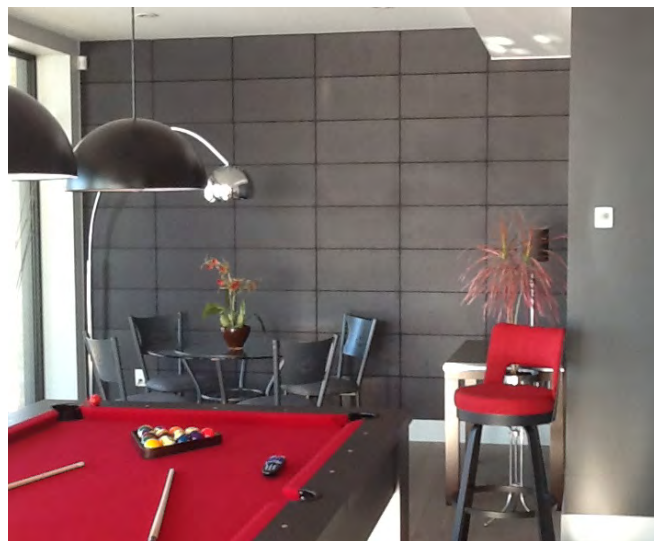


**wide variety of models
and configurations**





**an abundant array
of stunning finishes**



LOGO & DIGITAL GRAPHICS



CLICK™ textile moulded acoustic tiles are available with custom logos and digitally printed graphics.

ACOUSTIC PERFORMANCE*

Sound Absorption Coefficients (Hz)

125	250	500	1000	2000	4000	NRC
0.33	0.36	1.06	1.11	0.78	0.83	0.80

**The test results from an independent certified laboratory were done according to the following standards: ASTM C423-09a Standard Test Method for Sound Absorption and Sound Absorption Coefficients by the Reverberation Room Method. ASTM E795 Standard Practices for Mounting Test Specimens During Sound Absorption Tests.*

FLAMMABILITY

ASTM E-84 : Class A

BS EN 13501-1:2007 : Class B, s2, d2

INSTALLATION

For installation guidelines, please visit **eomac's** online information centre at **eomac.com**

design supply install

eomac's in-house Technical Team reviews architectural drawings and provides design and layout support. With each project, **eomac** issues a complete set of shop drawings. Contact us for a consultation or specific project review.



Artofix



www.eomac.com

eomac@eomac.com

© Copyright Eomac Ltd. All rights reserved.